

Restoration Fairphone (Android 12 operating system)

DB System

Digital bewegen. Gemeinsam.

Table of contents

1 First steps	3
1.1 Start installation	3
1.2 Scan QR code	5
1.3 Set up WLAN	7
2 Register Fairphone in the DB	9
2.1 Establish connection	9
2.2 Log in with the DB user	9
2.3 Install work profile	10
2.4 Creating a screen lock (password)	11
2.5 Skip Google services	12
2.6 Switch off extended warranty	13
3 Making settings on the device	14
3.1 Installing system apps	14
3.2 Search for operating system updates	15
3.3 Activate Welcome App	15

1 First steps

To integrate a smartphone/tablet into DB Systel's Enterprise Mobility Management, some adjustments must be made in advance. All relevant steps are explained below with screenshots and highlighted by a red frame.

Back up your business and private data and settings before resetting to factory settings.

You can find instructions for backing up data here: www.db.de/ae.

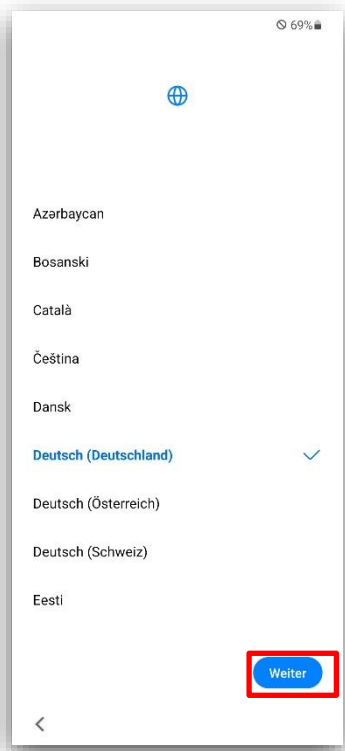
1.1 Start installation

During setup, make sure that your smartphone is connected to the Internet, otherwise you will not be able to complete the setup. Unpack the Fairphone and then proceed as follows:

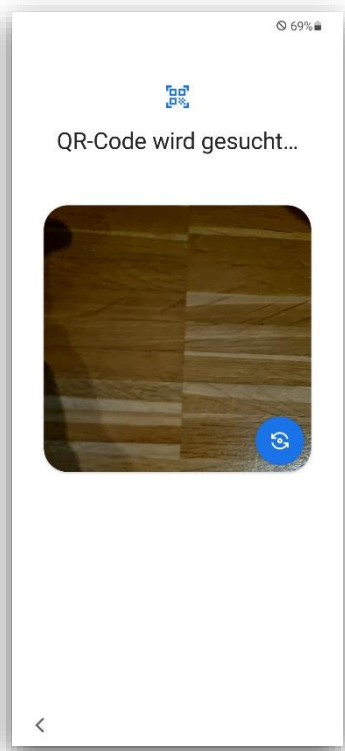
- Make sure that your Fairphone is either connected to the power supply or has a high battery level.
- Switch on the smartphone. After a short moment, the Fairphone installation help starts.



- You will be greeted in different languages. **Do not tap on Start** in the installation help, but on the free area on the screen **ten times**.



- Select the language "German (Germany)" and tap on "Next".



- The camera opens.

1.2 Scan QR code

■ If **WLAN** is available:



- If only **mobile data** is available:

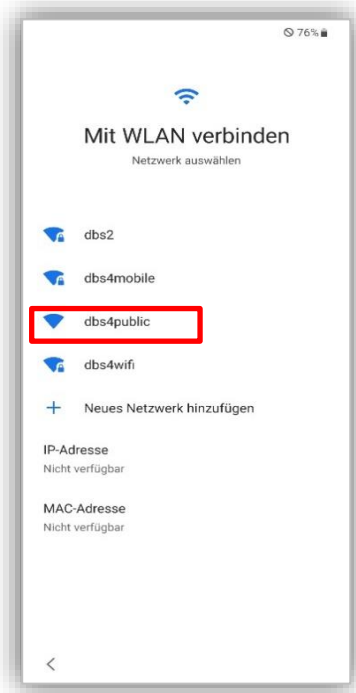


If the QR code does not work, you can also find all QR codes here:
mobileworkplace.deutschebahn.com/QR-Code-PRD

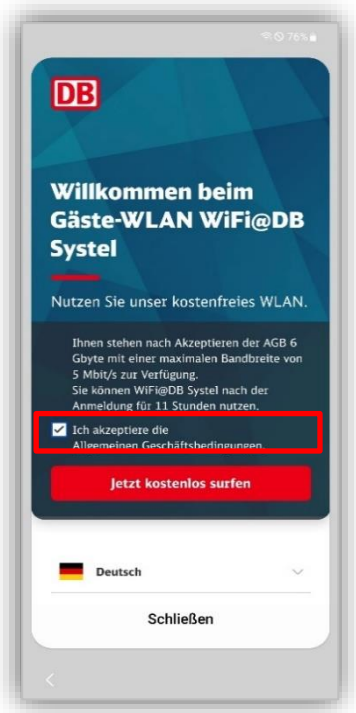
1.3 Set up WLAN

Next, set up the WLAN.

- If you are in a **DB building**:



- Tap on the WLAN "*dbs4public*".



- A dialog opens, accept the terms and conditions.
- Tap on "Surf now for free".



- Tap on "Close".

Note: If the connection to the WLAN "dbs4public" fails, we have provided troubleshooting instructions here: [DB Questions](#).

If **no DB WLAN** is available (e.g. because you are at home):

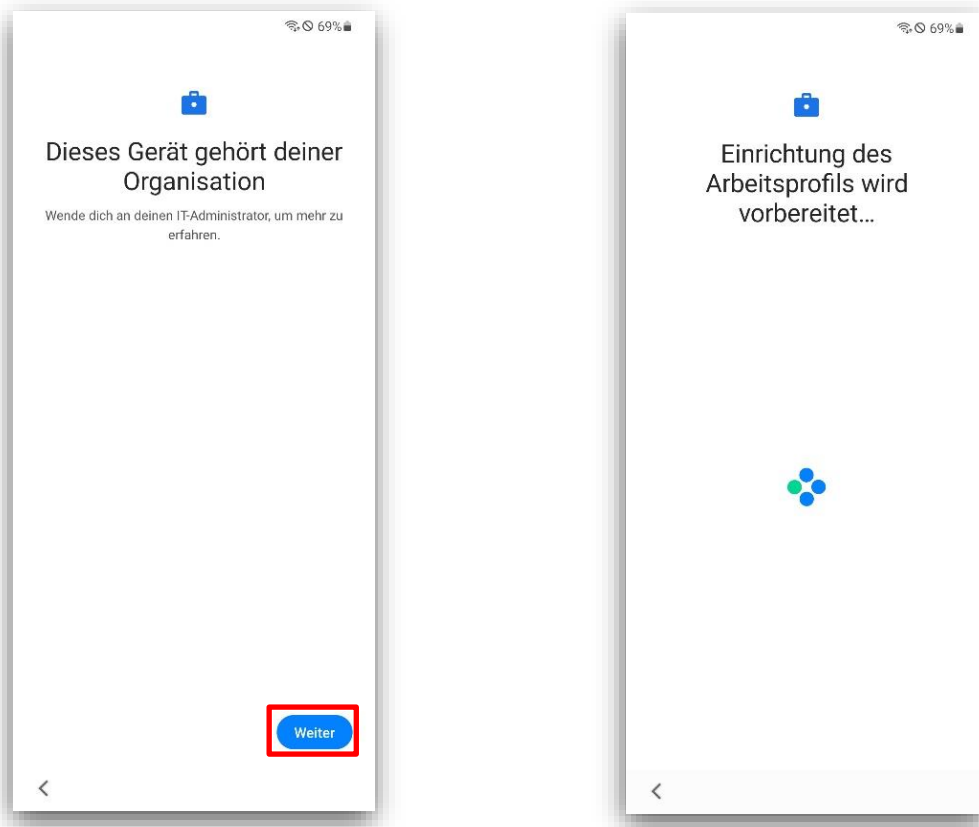
- Tap on your personal WLAN.
- Enter your personal login details and tap on "Connect".
- Tap on "Next".

2 Register Fairphone in the DB

The next step is to link your Fairphone to the DB network (more precisely in Enterprise Mobility Management, EMM for short). This requires a few steps. Follow the instructions on the screen.

2.1 Establish connection

The smartphone/tablet is set up.



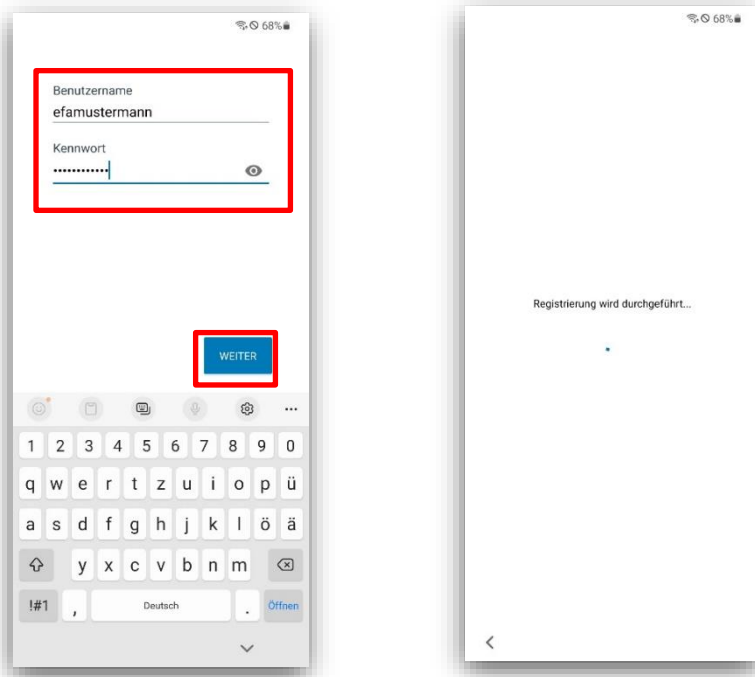
- Confirm the following queries with "Continue" and, if necessary, "Accept and continue".

2.2 Log in with the DB user

Now enter your DB user login data.

- **DB user login name:** Enter the *user name* (without spaces, no DB e-mail).
- **DB User Password:** Type in the *password*.
- Then tap on "Next".

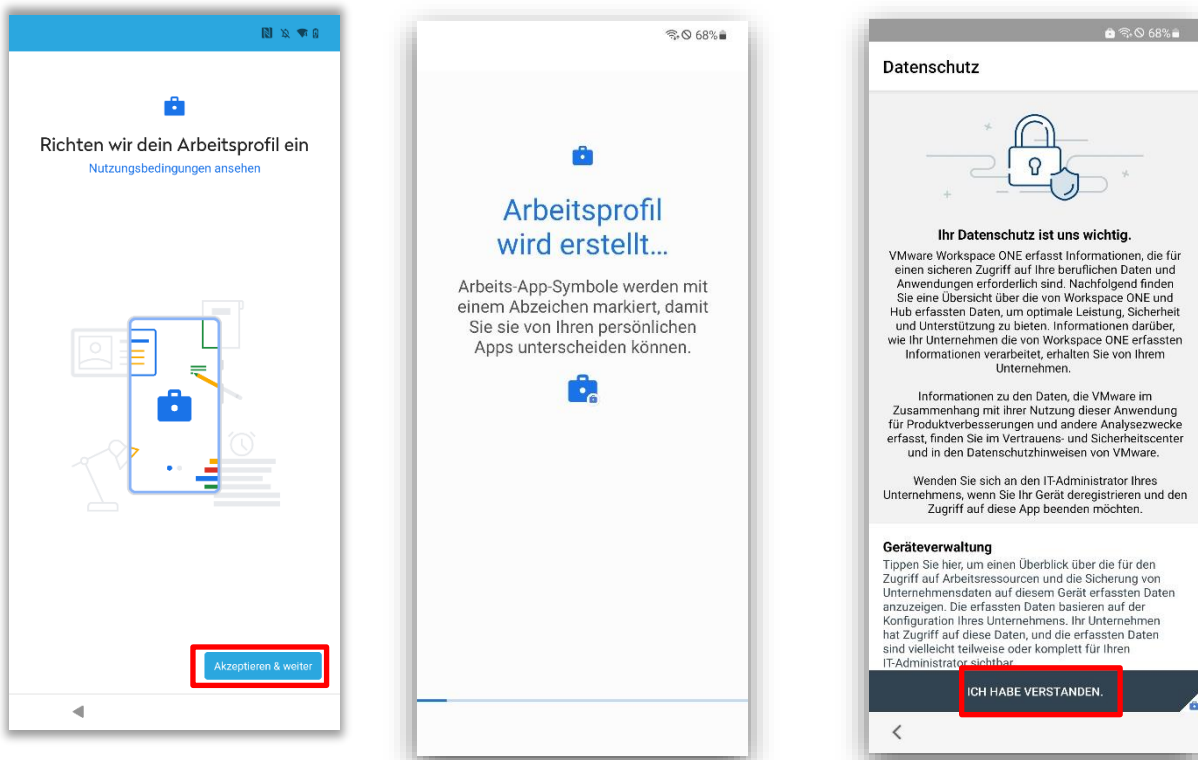
The link to the **DB network** (more precisely, the Enterprise Mobility Management, EMM for short) starts.



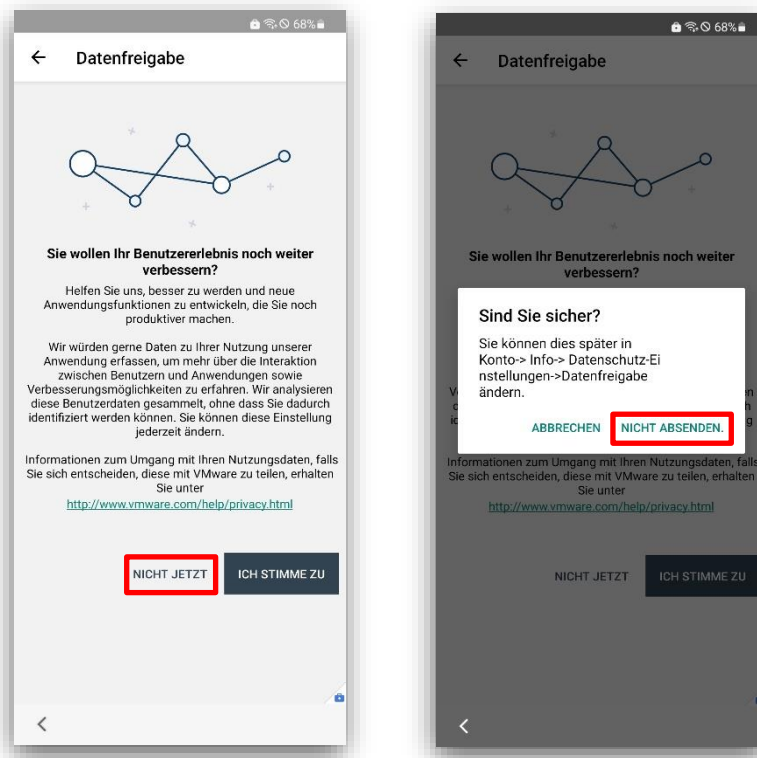
2.3 Install work profile

The applications (apps) will now be installed automatically. This process can take a few minutes. The work profile is then set up.

- Tap on "Accept & continue" to set up the work profile.
- On the next page, agree to the privacy policy by tapping on "I understand".



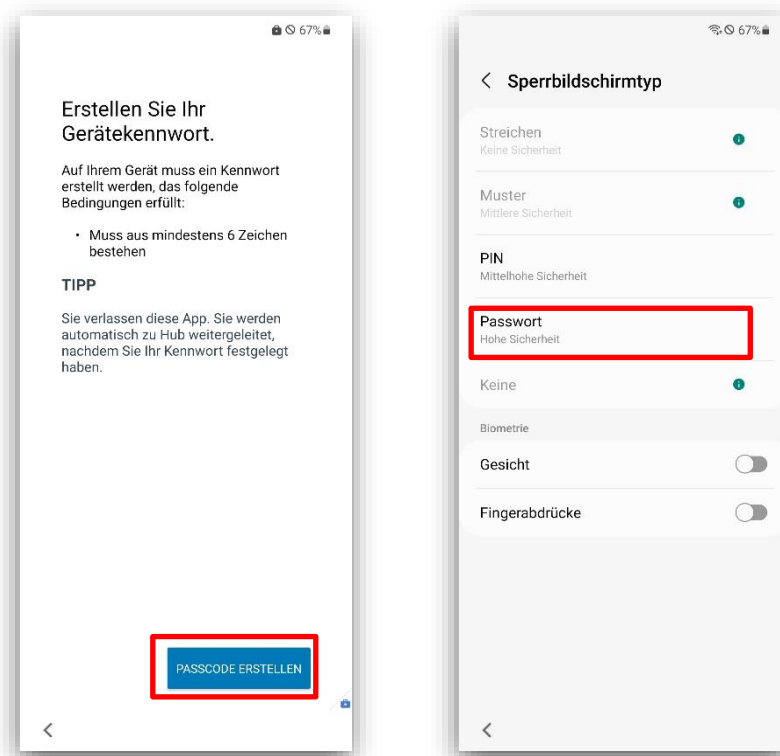
On the next page, select "Not now" and then "Do not send" so that no usage data is sent.



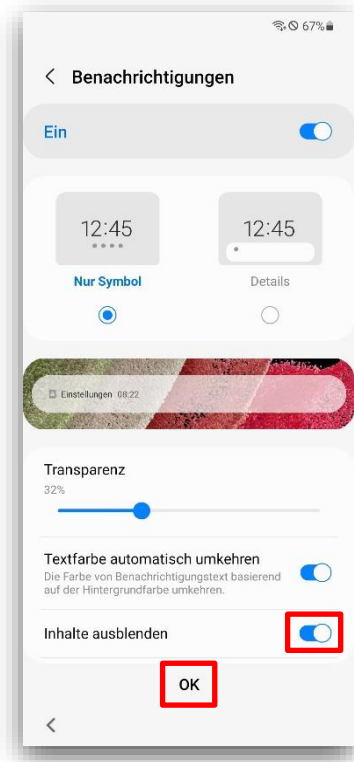
2.4 Creating a screen lock (password)

Next, set up a device password for the screen lock for the Fairphone. This is a data protection requirement at DB:

- Tap on "Create passcode" and then on "Password".



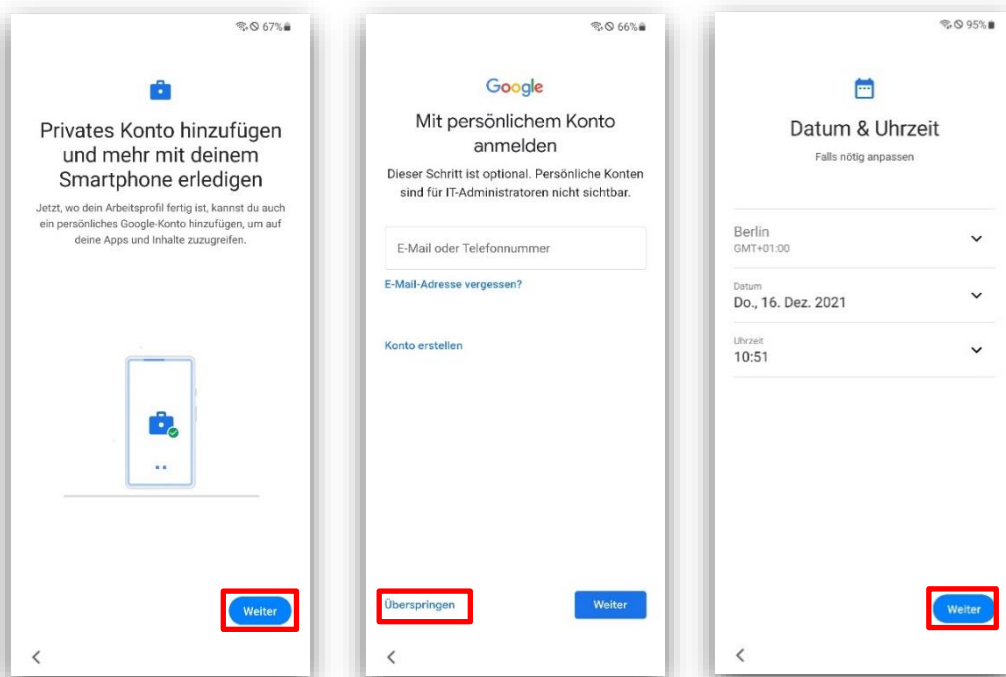
- Think of a character string with at least 6 characters (including at least one letter). Enter it twice in succession and tap "OK".
- **For notifications:** Activate "Hide content" and then tap on "OK".



2.5 Skip Google services

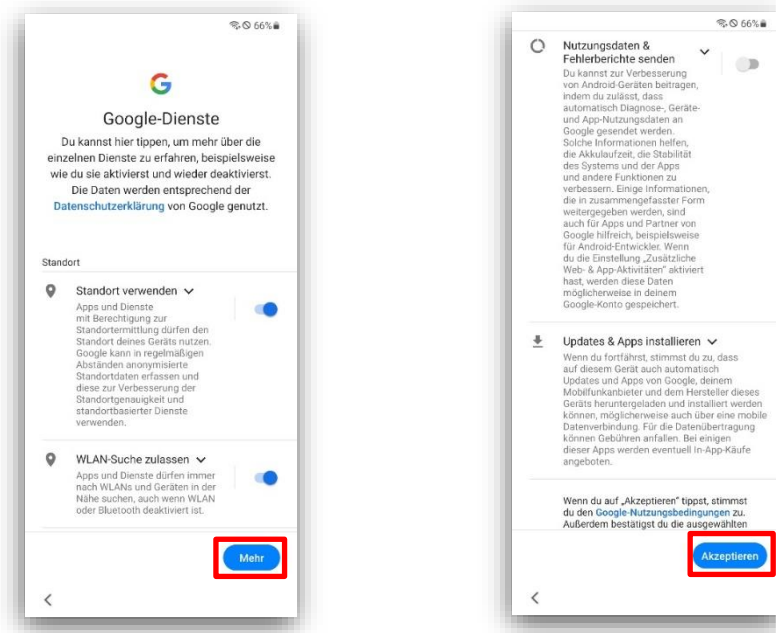
You will now be asked for a private Google account. This is not required for the installation and use of the DB apps, so skip the setup. If you want to set up your private account, you can do this later if required.

- Therefore, tap on "Next" and then on "Skip".
- Confirm the current time on the following screen with "Next".



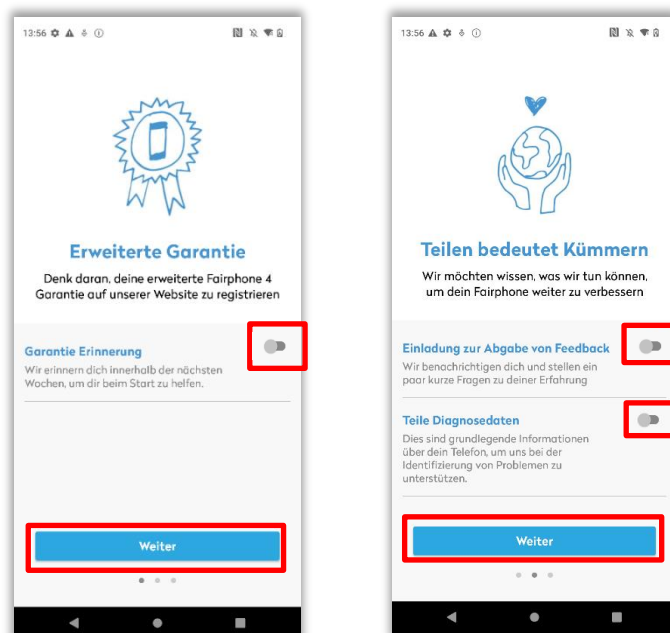
To use the Google Play Store for business apps, it is necessary to accept the Google terms of use. Proceed as follows:

- **Use location:** Move the slider to the right and tap "More" to see the other settings.
- **Send usage data & error reports:** Move the slider to the left to deactivate the function.
- Tap on "More", scroll all the way down and then tap on "Accept".



2.6 Switch off extended warranty

- **Guarantee Reminder:** Move the slider to the left to deactivate the function and tap on "Next".
- **Invitation to provide feedback:** Move the slider to the left to deactivate the function
- **Sharing diagnostic data:** Move the slider to the left to deactivate the function and tap "Next".

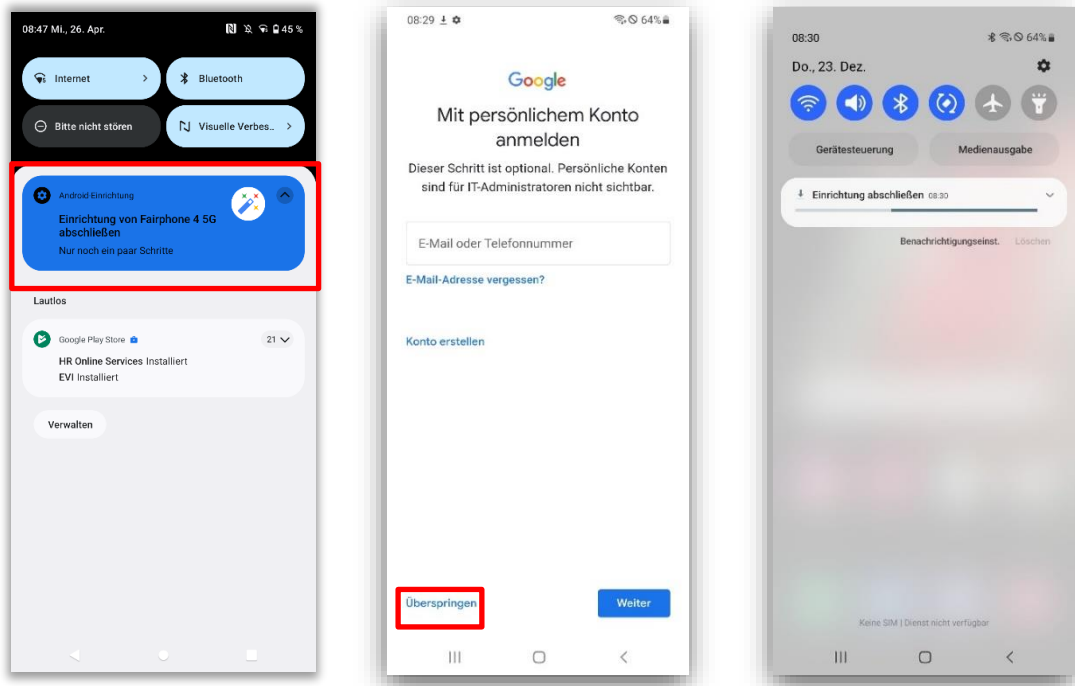


3 Making settings on the device

3.1 Installing system apps

Swipe once from top to bottom across the screen. The control center opens and the notification area below it.

- Tap on "Complete setup of Fairphone 4".
- Then tap on "Skip" on the following pages.
- The apps are then installed/updated.



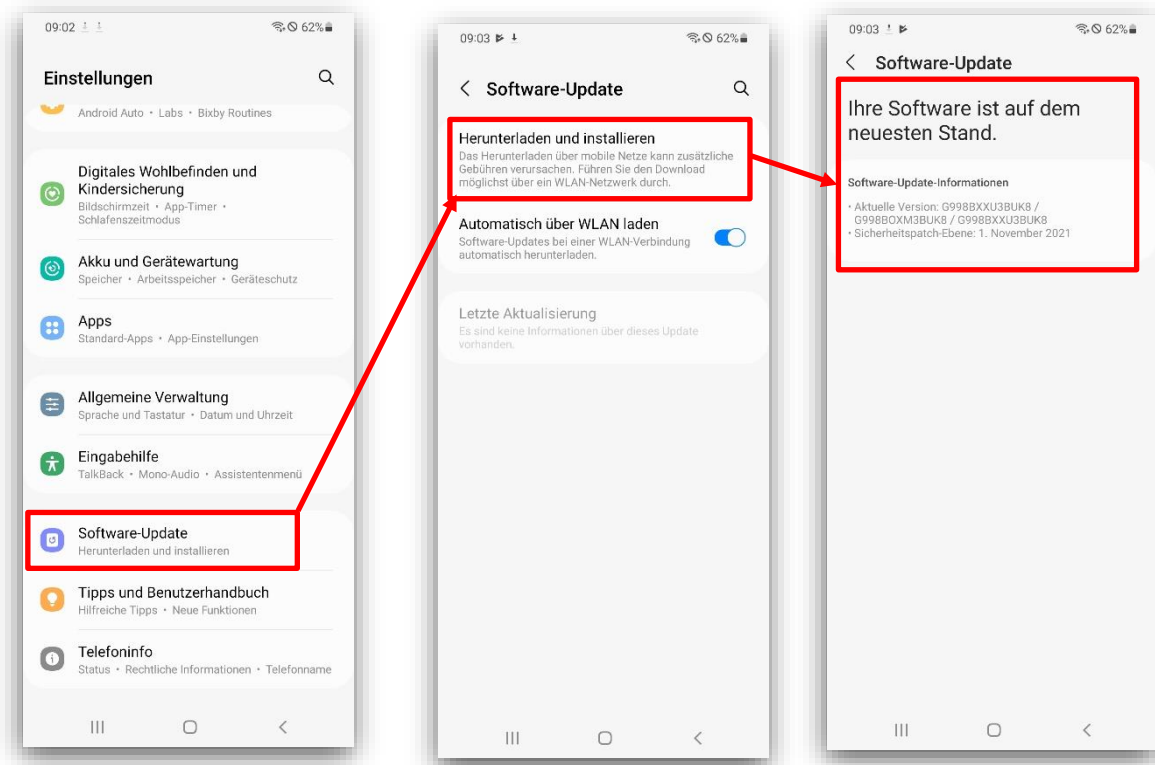
If you then swipe up on the **home screen**, you will see the "Work" area with your apps. If not all apps are available yet, wait a moment. This may take longer depending on your network connection.

It may be helpful to restart the device. If, contrary to expectations, not all applications can be found, please contact the IT ServiceDesk.



3.2 Search for operating system updates

- Go to the "Personal"/"Private" area on your Fairphone and tap on the "Settings" app.
- Scroll down and select "Software update".
- Tap on "Download and install".
- It will show whether an update is available. Carry out pending updates by tapping on "Install update".



3.3 Activate Welcome App



Now activate the **Welcome App** so that you can use all DB apps

You can find out how this works and more information about your smartphone/tablet in the general instructions for the initial setup www.db.de/ae.

Congratulations - you have successfully restored your work smartphone/tablet!