

Photo: AdobeStock\_246810373\_Gerhard Seybert

User manual version 1.1

## **Setup Multi User Service Samsung smartphone/tablet (Android operating system)**

**DB System**

Digital bewegen. Gemeinsam.

# Table of contents

<b>1 First steps</b>	<b>3</b>
1.1 Start setup	3
1.2 Scan QR Code	5
1.2.1 QR Code standard devices	5
1.2.2 QR Code for employees of DB Training:	7
1.3 WLAN	9
<b>2 Register smartphone/tablet in the DB</b>	<b>11</b>
2.1 Connection with the server	11
2.2 Log in with the group account	12
2.3 Set up work profile	13
2.4 Set up hub	14
2.5 Install Launcher	15
2.6 Skip Google Services	16
2.7 Agree to Samsung T&Cs	17
<b>3 Necessary settings</b>	<b>18</b>
3.1 Set up launcher	18
3.2 User login	20
<b>4 Admin Mode</b>	<b>21</b>
4.1 Exit Launcher	21
4.2 Configure power button	23
4.3 Launch Launcher again	25

# 1 First steps

The device must be integrated into DB Systel's Enterprise Mobility Management. Some adjustments are necessary for this. In the following, all relevant clicks are highlighted by a **red frame**.

**Before resetting to factory settings, back up your business and private data and settings.**

You can find instructions on how to back up your data here: [www.db.de/ae](http://www.db.de/ae).

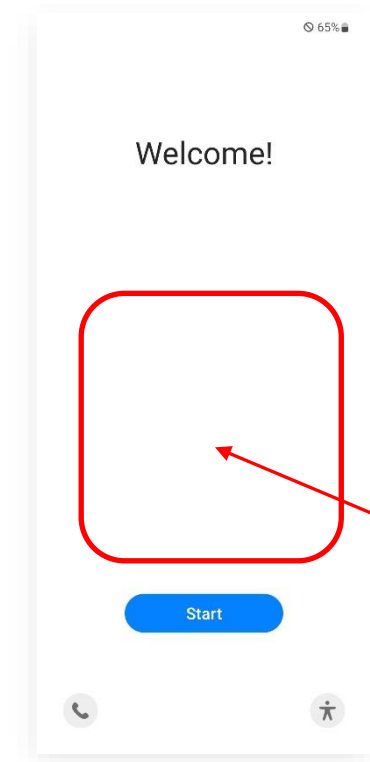
---

## 1.1 Start setup

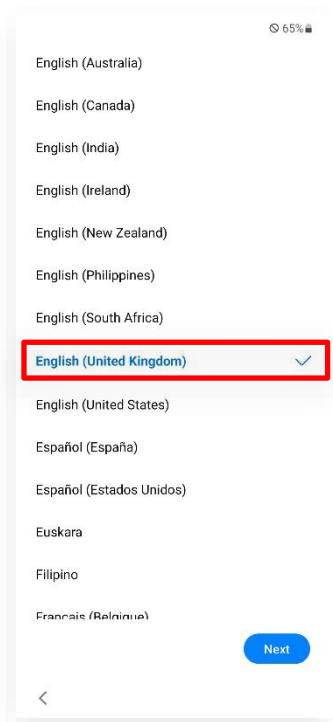
After unpacking or resetting the unit, follow the on-screen instructions to set up the unit.

During setup, make sure your smartphone/tablet is connected to the internet, otherwise you will not be able to complete the setup.

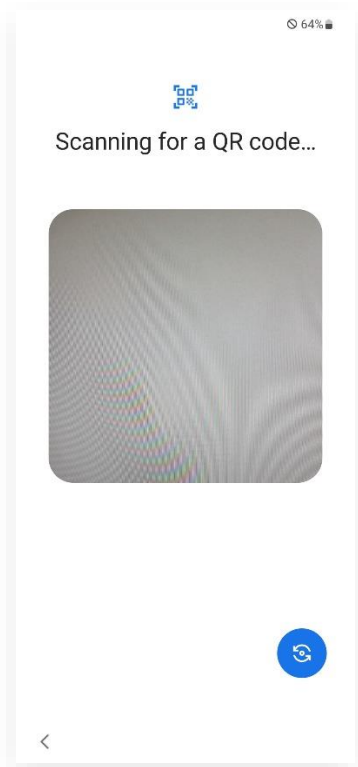
- Make sure that the smartphone/tablet is either connected to the power supply or has a high battery level during recovery
- Switch on the smartphone/tablet.



- In the installation help, **do not** tap **Start**, but tap the free area on the screen **ten times**.



- Check whether the desired language is selected. If not, adjust it.



- The camera opens.

---

## 1.2 Scan QR Code

Scan the QR code that suits you. Below you will find the QR codes for:

- QR code multi-user service standard devices
- QR code for DB Training employees

### 1.2.1 QR Code standard devices

- If **Wi-Fi** is available:



- When no Wi-Fi and only Mobile Data is available:



### 1.2.2 QR Code for employees of DB Training:

- When Wi-Fi is available:



QR Code for employees of DB Training:

- When no Wi-Fi and only Mobile Data is available:



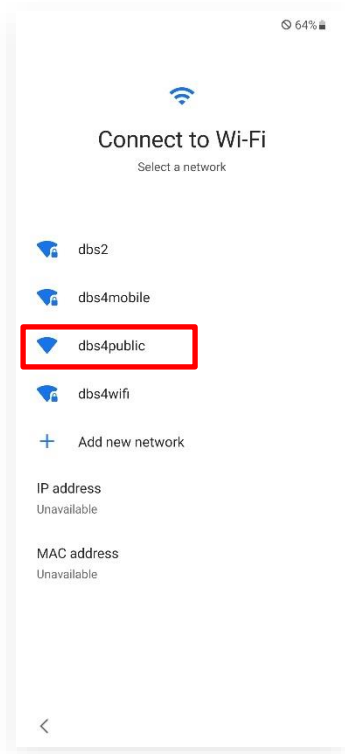
If the QR code does not work, you can also find all QR codes here:  
[mobileworkplace.deutschebahn.com/QR-Code-PRD](https://mobileworkplace.deutschebahn.com/QR-Code-PRD)



### 1.3 WLAN

Next, set up the Wi-Fi.

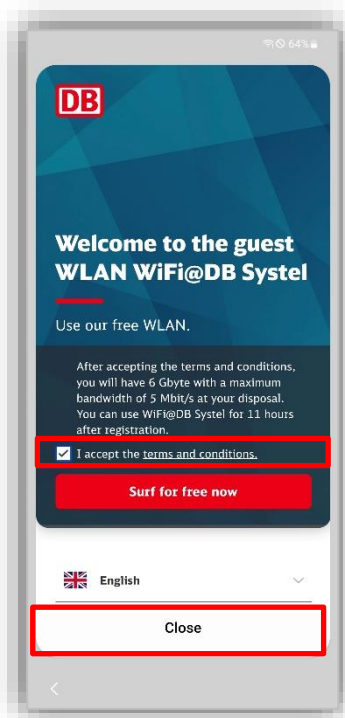
- If you are in a **DB building**:



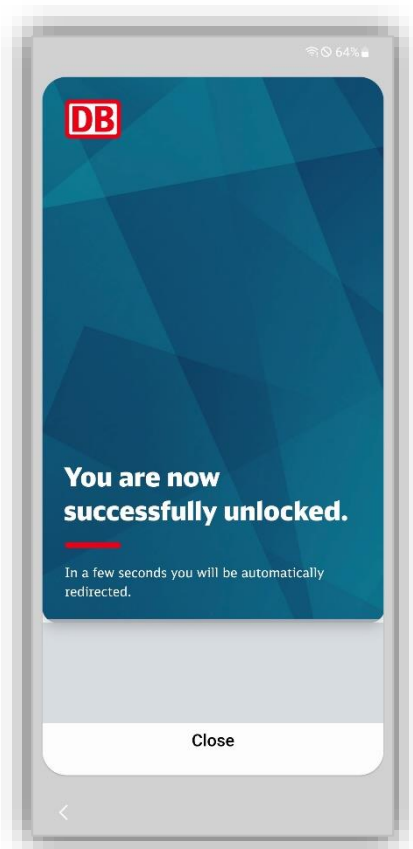
- Tap on the WLAN "*dbs4public*".

**Note:** If the connection to the "dbs4public" WLAN fails:

- Tap the "Start" button on the system start screen (see chapter 1.2).
- Then select the WLAN



- A dialogue opens, accept the terms and conditions.
- Tap on "Surf for free now".



- Tap on "Close".

If **no DB WLAN** is available (e.g. because you are at home):

- Tap your personal Wi-Fi.
- Enter your personal login data and tap on "Connect".
- Tap on "Next".

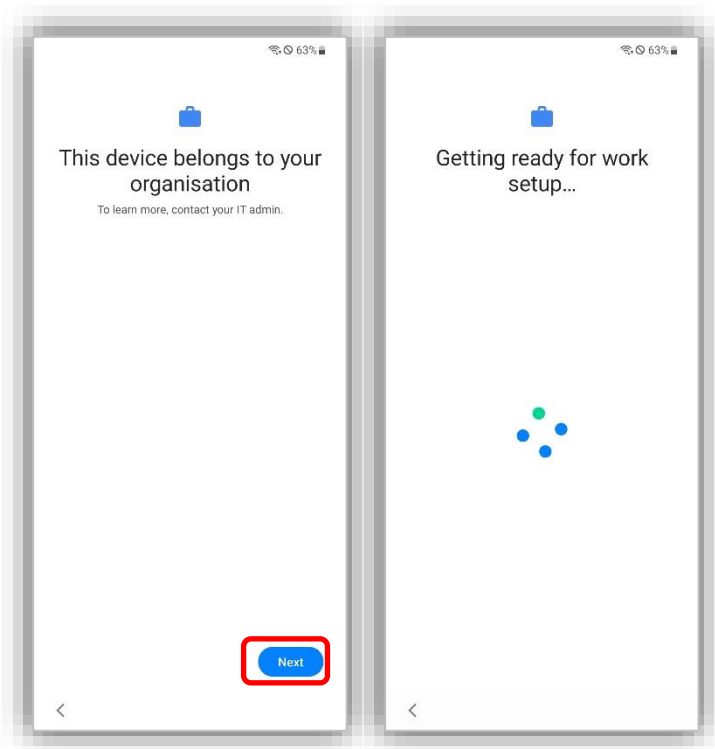
## 2 Register smartphone/tablet in the DB

In the next step, your DB smartphone/tablet must be linked to the DB network again (more precisely in Enterprise Mobility Management, or EMM for short). Follow the instructions on the screen.

### 2.1 Connection with the server

---

The smartphone/tablet is set up.

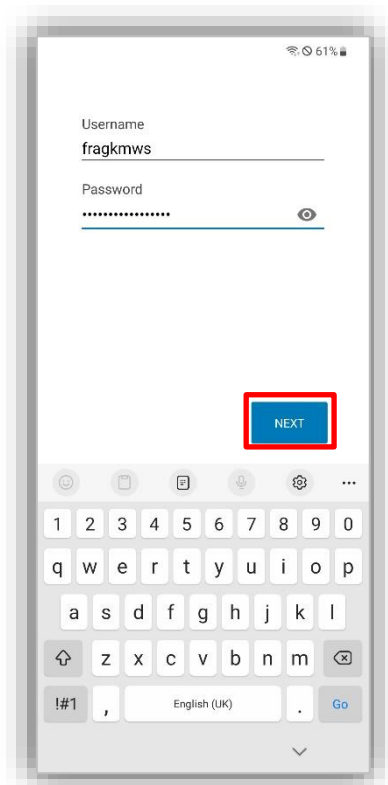


- Confirm the following queries with "Next" and, if applicable, "Accept and Continue".

---

## 2.2 Log in with the group account

Enter the login details for the group account.

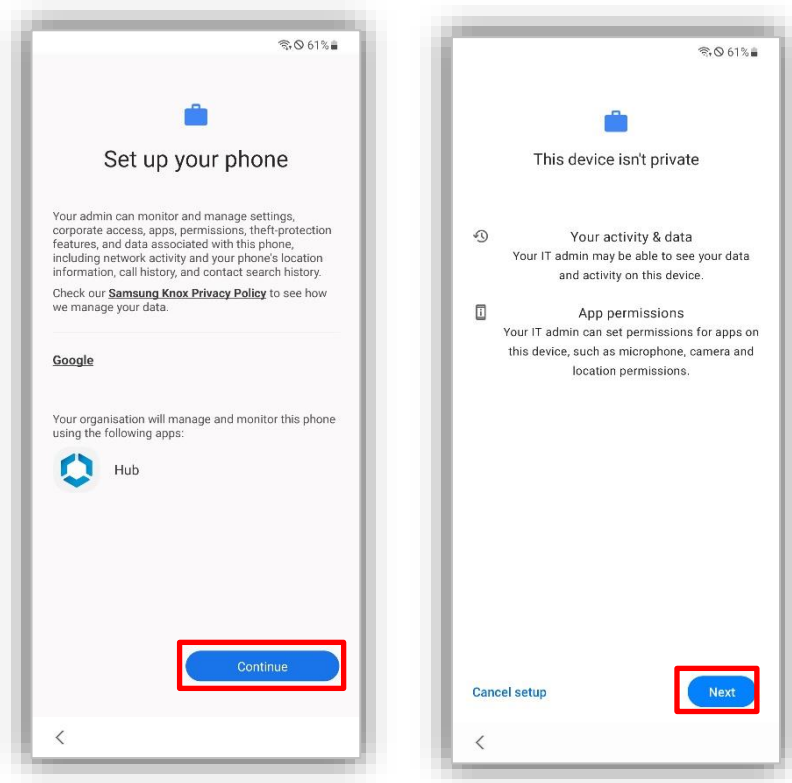


- Tap on "Next", the configuration of the unit begins.

---

## 2.3 Set up work profile

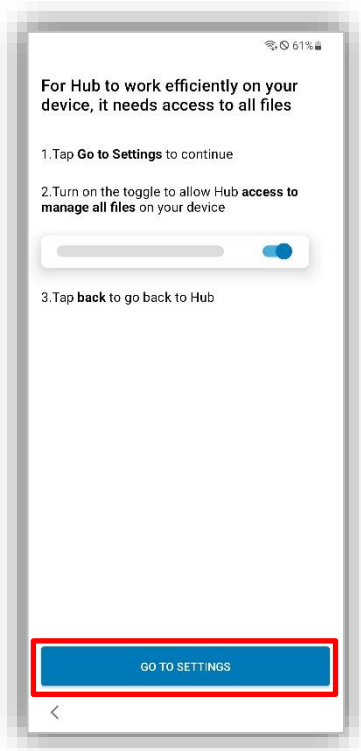
The applications (apps) will now be installed automatically. This process can take a few minutes. The work profile is then set up.



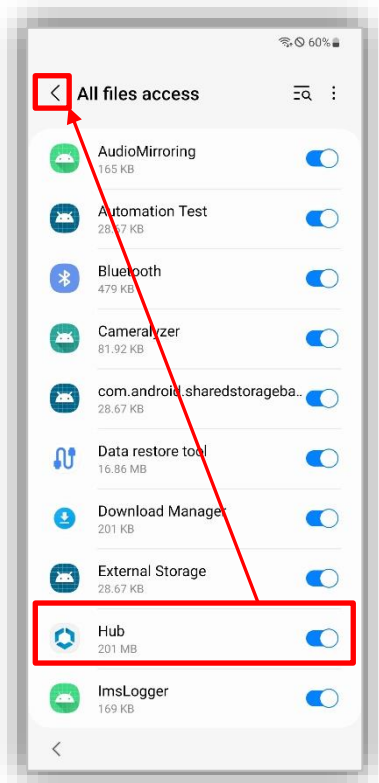
- Tap "Continue" and then „Next“.

## 2.4 Set up hub

On the next page, set up the permissions for the hub.



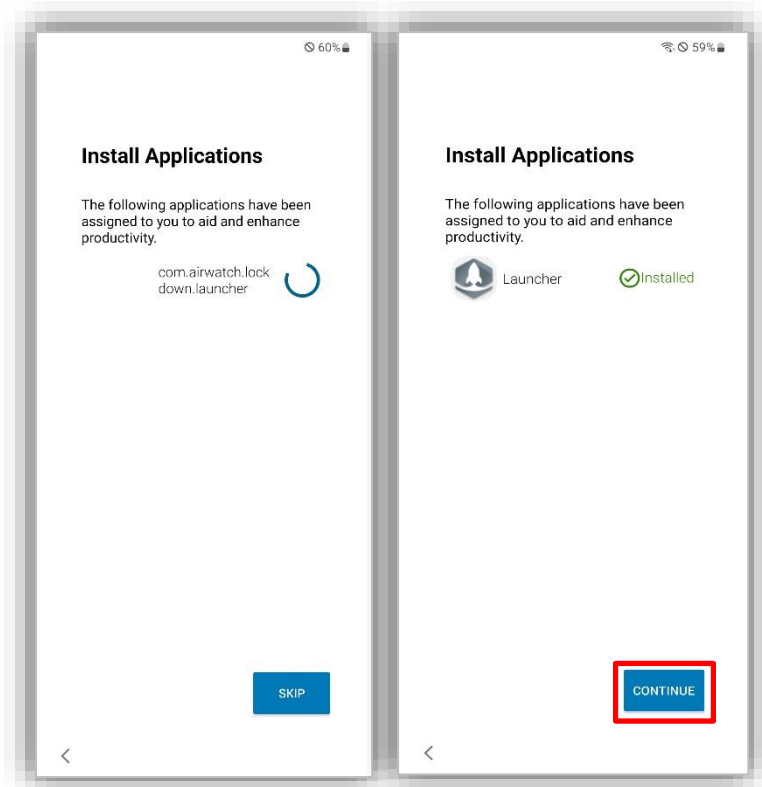
- Tap on "Go to settings".



- Slide the slider to the right to give Hub permission.
- Then tap the arrow at the top left to go back.

## 2.5 Install Launcher

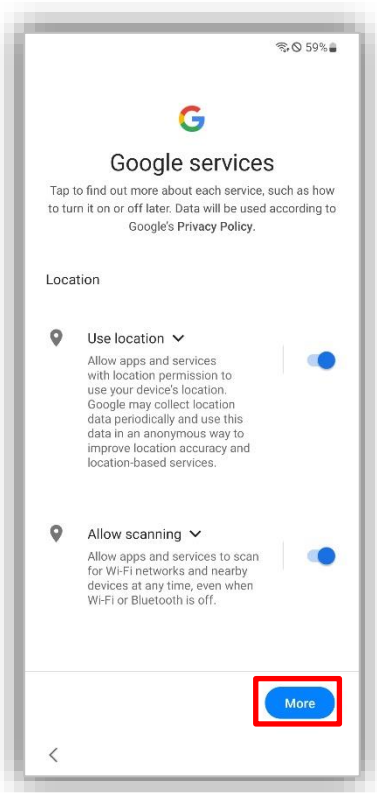
The Launcher app is installed.



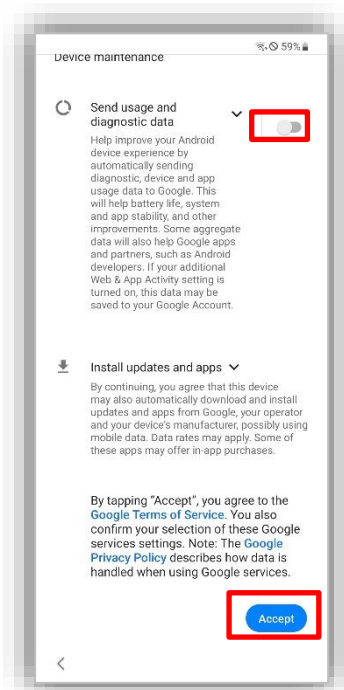
- Wait until the installation is complete.
- Then tap on "Continue".

## 2.6 Skip Google Services

To use the Google Play Store for business apps, it is necessary to accept the Google Terms of Use. Proceed as follows:



- Tap on "*More*" to see the other settings.



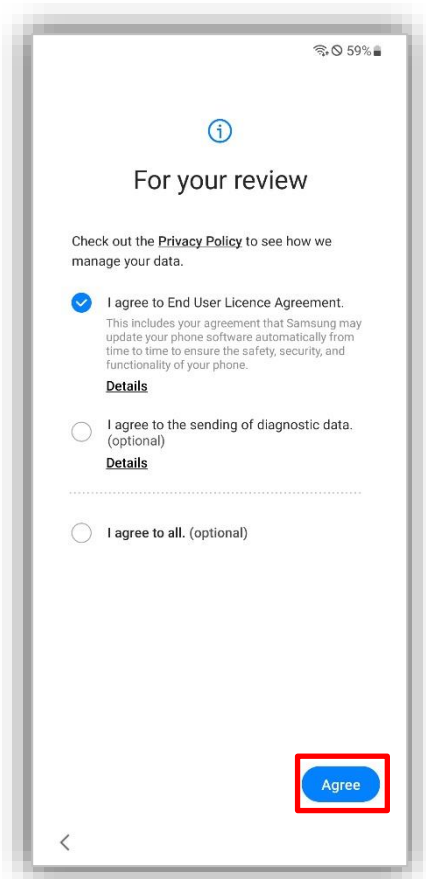
- **Send usage data & error reports:** Slide the slider to the left, the function is switched off.
- Then scroll all the way down and tap "*Accept*".



---

## 2.7 Agree to Samsung T&Cs

In the next step, accept the terms and conditions of the Samsung company.

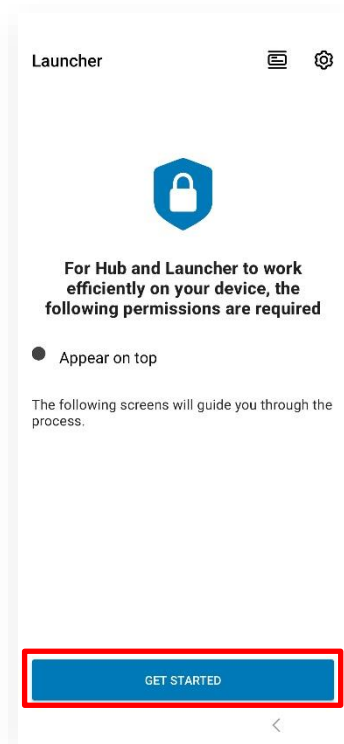


- Tap on "Agree".

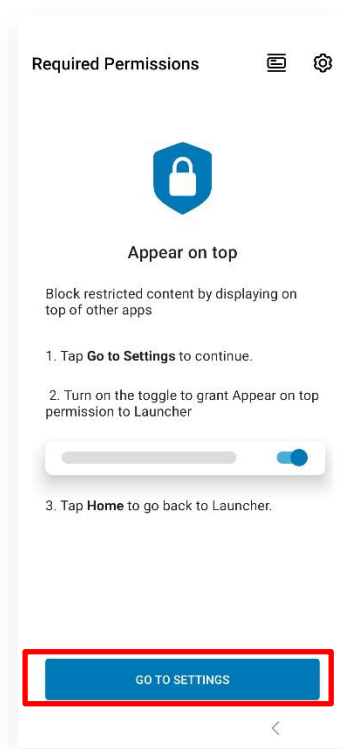
## 3 Necessary settings

### 3.1 Set up launcher

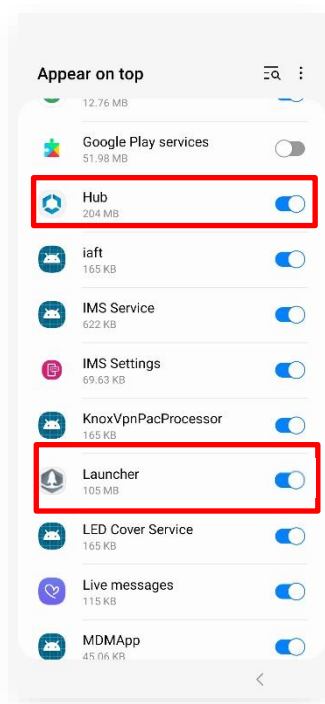
The Launcher app starts automatically. Set up the permissions for the Hub and Launcher app.



- Tap on "*Get Started*".



- Tap on "*Go to settings*".

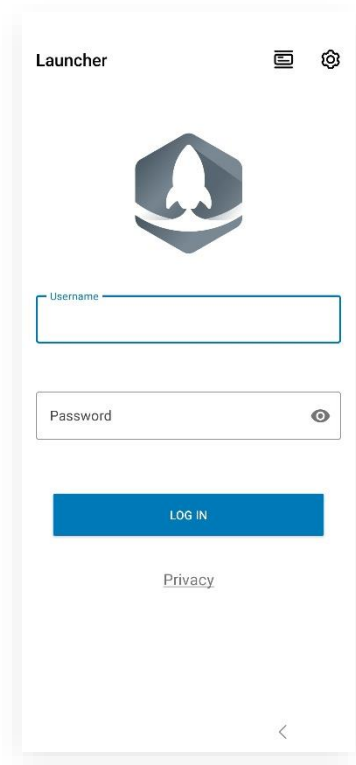


- **Hub:** Slide the slider to the right to give the Hub app permissions.
- **Launcher:** Slide the slider to the right to switch on the function.

---

### 3.2 User login

When this screen appears, a user can log in to the unit.



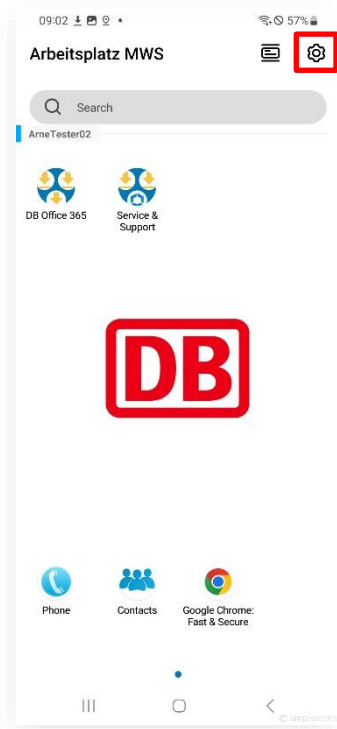
## 4 Admin Mode

Note: To switch on the admin mode, you must have logged in once as a user on the device.

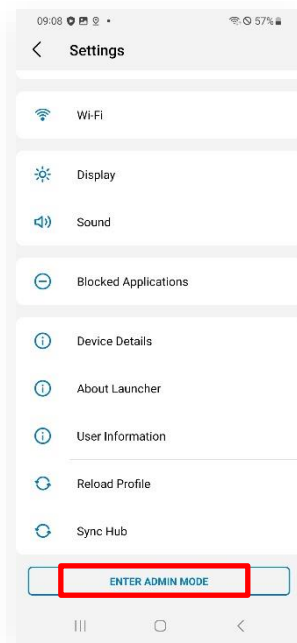
### 4.1 Exit Launcher

The user who has the admin passcode can make changes to the unit.

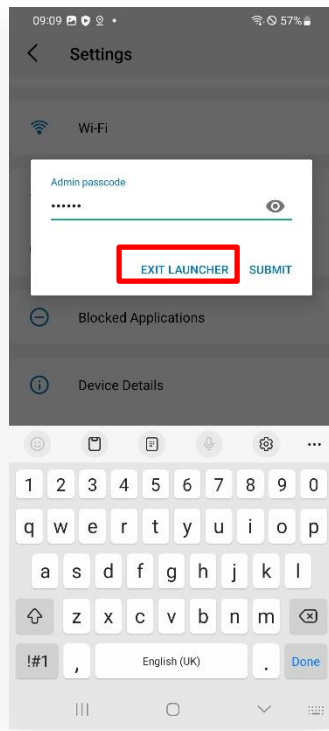
To do this, the admin mode must be activated and the launcher must be closed:



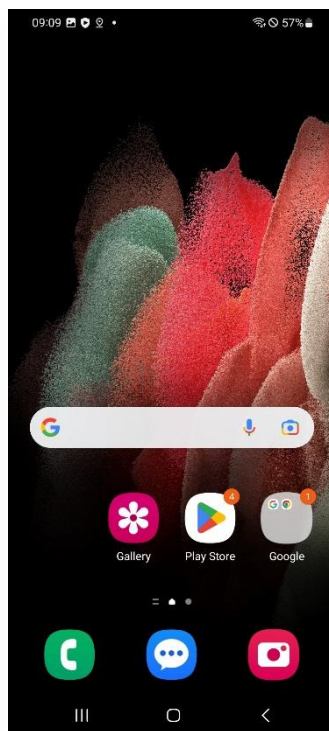
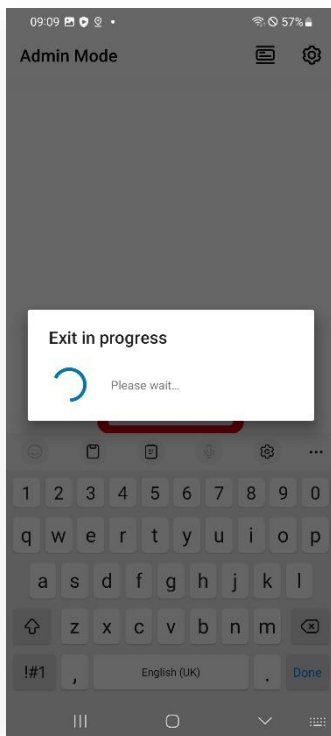
- On the homepage, tap the cogwheel icon in the top right-hand corner.
- The settings open.



- Tap on "Enter Admin Mode".



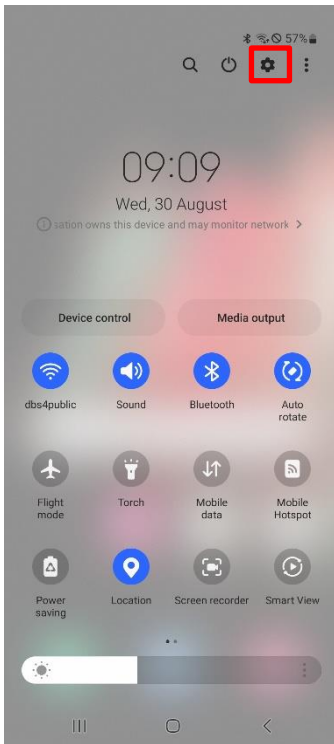
- Enter the administrator passcode in the field.
- Then tap on "Exit Launcher".



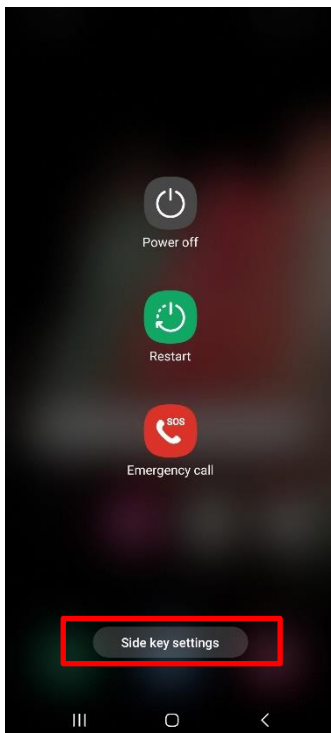
## 4.2 Configure power button

The power button is configured for the Bixby service by default. To enable the smartphone/tablet to be switched off or restarted as usual with the power button, adjust the setting for the power button:

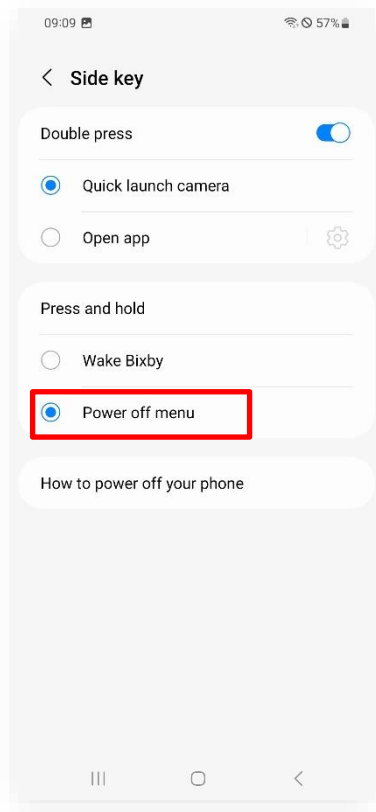
- Swipe the screen once from top to bottom.



- Tap the cogwheel at the bottom right.
- The settings open.



- Tap on "Side key Settings".



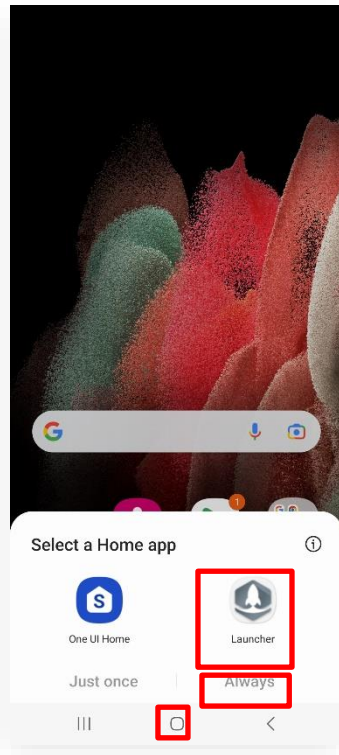
- Select the "*Power off menu*" option.
- Then exit the menu.



---

### 4.3 Launch Launcher again

To start the launcher again, tap the "*Home button*" of the device.



- Tap "*Always*" in the menu.
- The Launcher app starts.